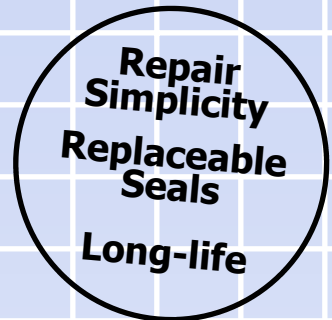


Plane Swivel Joints

Handles single & multi-plane swivel movement with positive sealing. Available in 1" through 6" sizes.



Special design features :

- Two rows of widely spaced bearings support heavier loads.
- Three-piece design simplifies repair.
- Spring energized seals offer leak-tight sealing at all pressures, including vacuum.
- Seal can be replaced without removing bearings.
- Available in three seal materials that are compatible with many gasses, fluids & chemicals.



Barco Plane Swivel Joints provide 360° movement between piping elements in one or more planes for conveying or transferring a wide range of fluids including oils, water, air, gasses and chemicals.

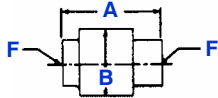
Available in three types: threaded, welded and flanged to suit your application.

Simple design permits ready installation and fast easy maintenance.

Easy numbering system						
BD-5241 0 - 16 - 01						
	-01	Buna-N Seal	-40°F to +225°F	(-40°C to +107°C)		
	-02	Teflon® Seal	-20°F to +325°F	(-30°C to +162°C)		
	-06	Viton Seal	-20°F to +300°F	(-30°C to +150°C)		
	Size Code	16	24	32	48	64 66
	= in inches	1"	1-1/2"	2"	3"	4" 6"
	= millimeters	25,4	38,1	50,8	76,2	101,6 152,4
	0	Carbon steel				
	1	Stainless steel				
	2	Combination of stainless and carbon steel (metal parts in contact with fluid are stainless steel)				
	Style of connection and angles					

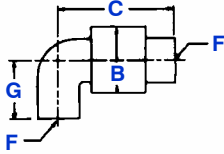
Plane Swivel Joints

Barco supplies several different styles and sizes to suit your particular application.



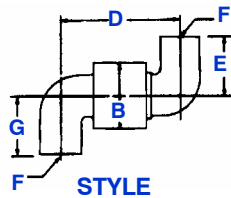
STYLE

Welded end BD-5141
Threaded end BD-5241



STYLE

Welded end BD-5142
Threaded end BD-5242



STYLE

Welded end BD-5143
Threaded end BD-5243

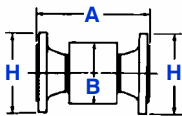
THREADED END STYLE

JOINT SIZE	SIZE CODE	A	B	C	D	E	G	* PIPE THREAD F	Maximum cold working Pressure psi (Kg/cm ²)
1" 25mm	16	4.19" (106)	2.50" (64)	4.38" (111)	4.59" (117)	2.50" (64)	2.50" (64)	1" NPT	1250 (88)
1-1/2" 40mm	24	4.62" (117)	3.25" (83)	5.06" (128)	5.50" (140)	3.25" (83)	3.25" (83)	1-1/2" NPT	1000 (70)
2" 50mm	32	5.88" (149)	4.00" (102)	6.81" (173)	7.50" (191)	3.50" (89)	3.69" (94)	2" NPT	1000 (70)
3" 75mm	48	6.88" (175)	5.62" (143)	7.25" (184)	8.40" (213)	4.69" (119)	4.69" (119)	3" NPT	1000 (70)

* also available in BSPT threads

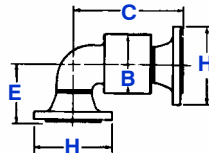
WELDED END STYLE

JOINT SIZE	SIZE CODE	A	B	C	D	E	Maximum cold working Pressure psi (Kg/cm ²)
3" 75mm	48	12.88" (327)	5.50" (140)	11.95" (304)	10.88" (276)	3.00" (76)	1000 (70)
4" 100mm	64	13.22" (336)	7.00" (178)	13.22" (336)	13.22" (336)	4.00" (102)	1000 (70)
6" 150mm	66	16.75" (425)	9.00" (229)	18.75" (476)	20.75" (527)	6.00" (152)	750 (53)



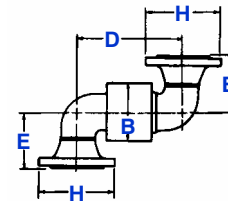
STYLE

BD-5341



STYLE

BD-5342



STYLE

BD-5343

FLANGED END STYLE

JOINT SIZE	SIZE CODE	A	B	C	D	E	H	Maximum cold working Pressure psi (Kg/cm ²)
3" 75mm	48	10.38" (264)	5.50" (140)	10.70" (272)	10.95" (278)	5.75" (146)	7.50" (191)	275 (19)
4" 100mm	64	11.22" (285)	7.00" (178)	12.47" (318)	13.22" (336)	7.12" (181)	9.00" (229)	275 (19)
6" 150mm	66	15.75" (400)	9.00" (229)	18.75" (476)	20.75" (527)	9.50" (241)	11.00" (279)	275 (19)

Supplied with ANSI 150 lb.
Flange pressure temperature
ratings for over +100° F (37.5° C)
Special flanges available.
Contact Barco

For more information contact:

Fulton
SYSTEMS

Fulton Systems
5875 Peachtree Industrial Blvd.
Suite 330
Norcross, GA 30092
Ph: 770-447-1400
Fx: 770-447-4277
www.fultonsystems.com



A DIVISION OF MARISON INDUSTRIES