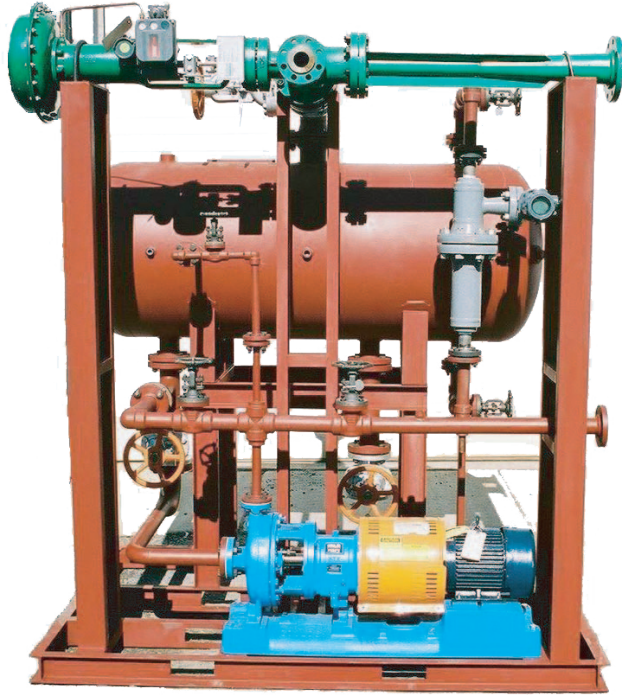


FULTON SEPARATOR MODULES



Fulton
SYSTEMS

5875 Peachtree Industrial Blvd.
Suite 330 Norcross, GA 30092

Phone: 770.447.1400 Fax: 770.447.4277

www.fultonsystems.com

Product: Fulton Systems modular steam and condensate modules

Size: Condensate flows to 500 gallons per minute. Horizontal and Vertical tank arrangements available.

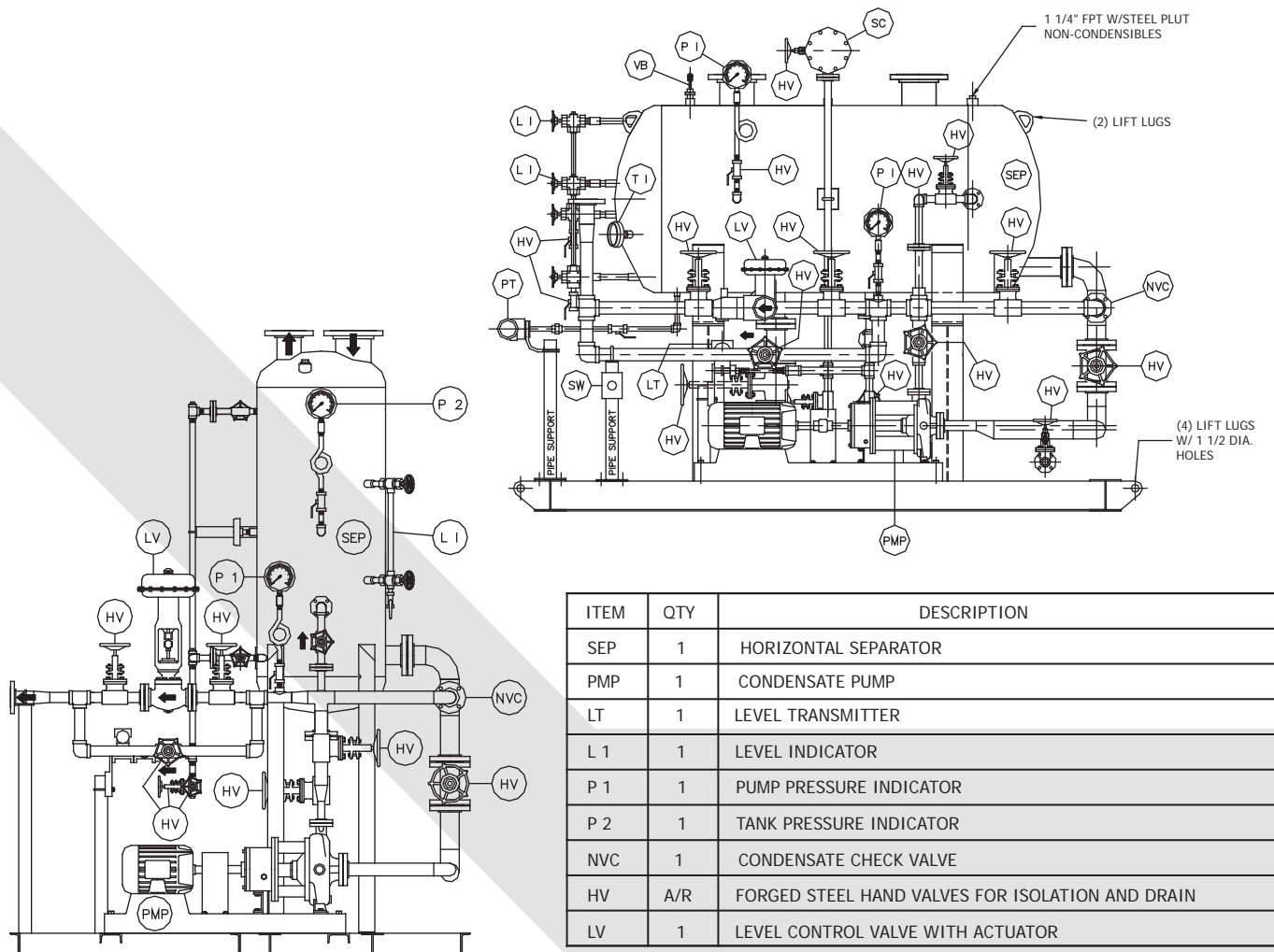
Description: Units supplied in modular form with equipment mounted on a structural frame base. Separator
 tanks receive the two-phase mixture of blowthrough steam and condensate from the dryer section.
 Internal baffling combined with conservative fluid velocities, separates the two-phase flow. The
 steam exits the separator and is made available to the process. The condensate level in the tank is
 automatically controlled through a condensate pump and level valve to maintain constant level
 conditions.

Primary Use: Dryer steam and condensate systems for conventional Yankee Systems and all condensate
 collection applications.

Design: Standards for pressure up to 175 psig at 400 Deg. F. Canadian Registration available.

Construction: Carbon steel channel frame with solid carbon steel base plate. Installation is facilitated by leveling
 and grouting. Carbon steel tank supports. Baffled low pressure drop carbon steel separator tank
 bearing A.S.M.E. and National Board registration. ANSI centrifugal condensate pump with C.I.
 bedplate, coupling guard, and TEFC motor. Required ANSI steel manual hand valves for
 control, equipment isolation, and drain. Carbon steel interconnecting piping between equipment
 and separator. Automatic level controller. Level control valve complete with pneumatic fail open
 actuator. Low level pump shut-off. Steel switch panel for housing pump ladder logic, pressure
 switch. Hand-Off-Auto, 3-position switch and two process pressure gauges. Temperature gauge
 with stainless thermowell. Visual level indicator. All bare metal surfaces prime painted for
 protection in transit.

Features: Eliminates expensive field assembly. All equipment supplied is custom engineered and selected to
 meet specific machine needs. Minimum field effort required for installation. Units are ready for
 service after removing all shipping braces, connecting process piping and supplying electrical
 power to the pump. A wide variety of OEM components are available to meet individual needs and
 preferences.



ITEM	QTY	DESCRIPTION
SEP	1	HORIZONTAL SEPARATOR
PMP	1	CONDENSATE PUMP
LT	1	LEVEL TRANSMITTER
L 1	1	LEVEL INDICATOR
P 1	1	PUMP PRESSURE INDICATOR
P 2	1	TANK PRESSURE INDICATOR
NVC	1	CONDENSATE CHECK VALVE
HV	A/R	FORGED STEEL HAND VALVES FOR ISOLATION AND DRAIN
LV	1	LEVEL CONTROL VALVE WITH ACTUATOR