

# FULTON STEAM CONDENSER



**Fulton**  
**SYSTEMS**

5875 Peachtree Industrial Blvd.  
Suite 330 Norcross, GA 30092

Phone: 770.447.1400 Fax: 770.447.4277

[www.fultonsystems.com](http://www.fultonsystems.com)

Product:  Horizontal Multi-Pass Steam Condenser

Size:   12", 14", 18" and 24" Shell Diameter with condensing capacities to 12,900,000 B/hr. Special unit   sizes are available upon request.

Description:  Shell and tube steam condenser, multi-pass counter current flow. TEMA type BFT with straight   tubes and floating head. Tubes are rolled into stationary tube sheets on one end and a floating   head tube sheet at the opposite end. Units supplied complete with saddle supports for horizontal   installation.

Primary Use:  Paper Machine (Conventional and Yankee) Steam and Condensate

Design:  Shell side pressure full vacuum to 150 psig at 400°F. Tube side pressures to 100 psig at 340°F.

Materials of Construction:

Shell Side (Steam)

◆Shell and Head: A.S.M.E. Stamped Carbon Steel ◆Nozzles: 150# ANSI B16.5 ◆Nozzle Inlet Head: Ductile Iron

Tube Side (Cooling Water)

Tubes available:   Admiralty Brass, 304 or 316 Stainless Steel, 90/10 or 70/30 Cupro Nickel

Tube Diameters:   5/8" O.D. (Standard) 3/4" and 1" Cupro Nickel Available.

Tube Sheets:   Carbon Steel (Standard), Stainless Steel and

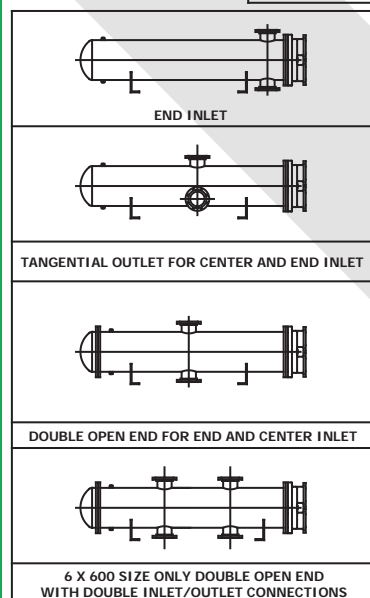
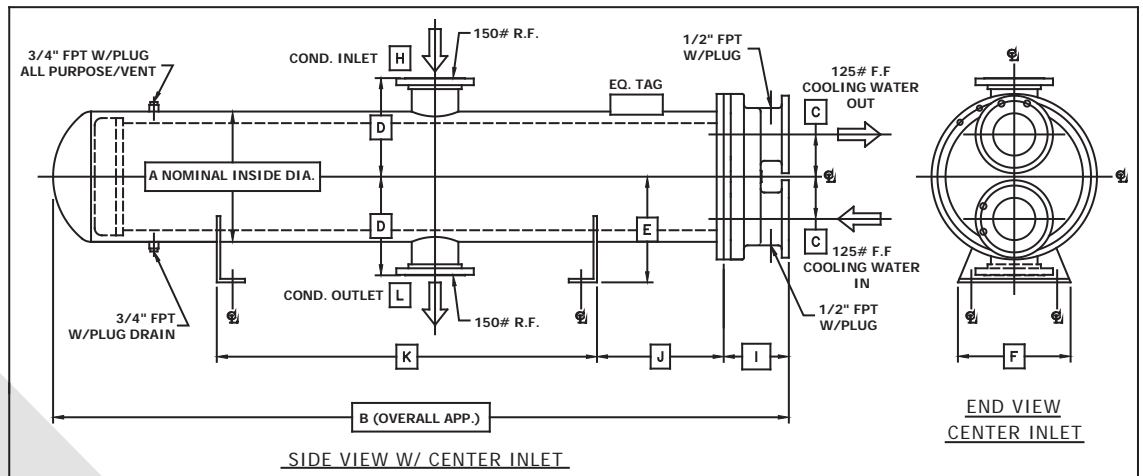
Baffles:    Stainless Steel

Tube supports & Tie Rods:  Carbon Steel

Stationary/Floating Head:  Ductile Iron

Features:

Recovers condensate and latent heat in waste steam. An essential piece of equipment for evacuating blow through steam and condensate from low-pressure dryers. Provides heat recovery capabilities and increased energy efficiency for sheet break and other upset operating conditions. Improves papermaker's machine control. Floating head design provides maximum accessibility and eliminates thermal expansion problems. For easy cleaning and maintenance, double open-ended construction is available. This facilitates on site cleaning of tubes when removal of tube bundle would otherwise be difficult. Fulton Systems offers in-house repair and reconditioning rebuild services.



SIZE	A	B	C	D	E	F	G	H	I	J	K	L	BUNDLE LENGTH
3 X 65	12"	87 3/4"	4 1/2"	10"	10"	8"	3"	3"	8"	11"	56 1/2"	3"	72"
3 X 74	12"	99 3/4"	4 1/2"	10"	10"	8"	3"	3"	8"	11"	68"	3"	84"
4 X 116	14"	89"	5"	12"	11 3/4"	12"	4"	6"	9"	12"	54"	4"	72"
4 X 132	14"	101"	5"	12"	11 3/4"	12"	4"	6"	9"	12"	66"	4"	84"
6 X 200	16"	92 1/4"	6"	14"	15"	16"	6"	8"	9 1/4"	18"	44"	6"	72"
6 X 230	16"	104 1/2"	6"	14"	15"	16"	6"	8"	9 1/4"	18"	54"	6"	84"
6 X 350	24"	92 1/2"	9"	18"	17"	18"	6"	8"	10 5/8"	20"	42"	6"	72"
6 X 400	24"	104 1/2"	9"	18"	17"	18"	6"	8"	10 5/8"	20"	54"	6"	84"
6 X 600	24"	146"	9"	18"	18"	18"	6"	8"	10 3/4"	29"	68"	6"	126"

1. ALL BOLT HOLES STRADDLE CENTERLINES  
 2. A.S.M.E. SEC. II, DIV. 1 STAMP & N.B. REG.  
 3. TWO AND FOUR PASS UNITS AVAILABLE  
 4. TUBES ARE STANDARD 5/8" O.D. (BRASS & ST. STEEL AVAILABLE)  
 5. TUBE SIDE CONFIGURATION OPTIONS ARE NOT AVAILABLE ON OUR STANDARD UNITS. HOWEVER, THEY MAY BE AVAILABLE ON A SPECIAL REQUEST BASIS. PLEASE CONTACT FULTON SYSTEMS FOR MORE INFORMATION.