

Fulton SYSTEMS

ANNOUNCING

Fulton Systems and Barco Partnership

Since 1924 Fulton Systems continues to supply products and Paper Industry Steam and Condensate systems.



Fulton
SYSTEMS

Fulton Systems History:

- 1924 Fulton Engineering
- 1927 Midwest Fulton
- 1954 Ross Midwest Fulton
- 1957 Ross Pulp & Paper
- 1984 Hercules Steam Systems
- 1991 Fulton Systems
- 2002 Fulton Systems Acquires TSG Steam Group
- 2003 Super Syphon
- 2004 Fulton Systems & Barco Partnership



BARCO

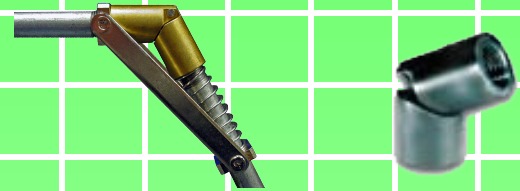
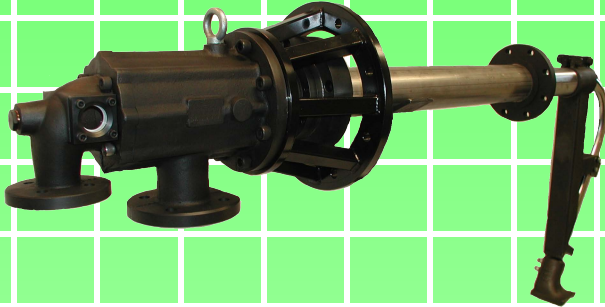
For 90 years, BARCO continues to solve fluid flow problems in processing and power industries.

Barco rotary joints are found in many industries including the Pulp & Paper Industry

CONTACT

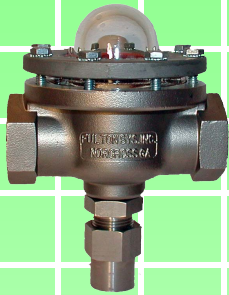
Fulton Systems brings this partnership
to the Paper Industry
Contact Fulton Systems for all
sales & support needs

High-Speed Steam Joints, Syphons



Barco Syphon Elbows

The Barco Syphon Elbow and Supported Hinged Syphon Elbow are available for slower speed applications.



Fulton Visual Flow Indicators

Many types and sizes are offered, including the Ballsight Glass design which allows easy viewing and control of dryer condensate flow. Good for 150PSIG operations.



Fulton Autoflex

This stainless steel assembly is ready for installation on a dryer. Ideal stationary syphon design for condensate removal from dryers operating at speeds up to 750 FPM. Unique design is more tolerant of abuse.



Fulton Super Syphon

This rotary syphon assembly can be installed without entering the dryer. Single piece design replaces units with multiple, mechanically support devices. Materials and sizes for all dryers and rotary joints. Ideal rotary syphon for condensate removal from dryers operating at speeds of 700 to 2200 FPM.



Auxiliary dryer drainage equipment:

- Stainless steel braided hose.
- Teflon lined stainless steel hose.
- Carbon steel quick release flanges.
- Journal flanges



Barco Traditional Rotary Syphon

The Barco Stainless Steel spring loaded syphon directly replaces existing units in the paper industry. Heavy duty design and long radius full flow elbow assures long life and minimal pressure drop.



Dryer Bars

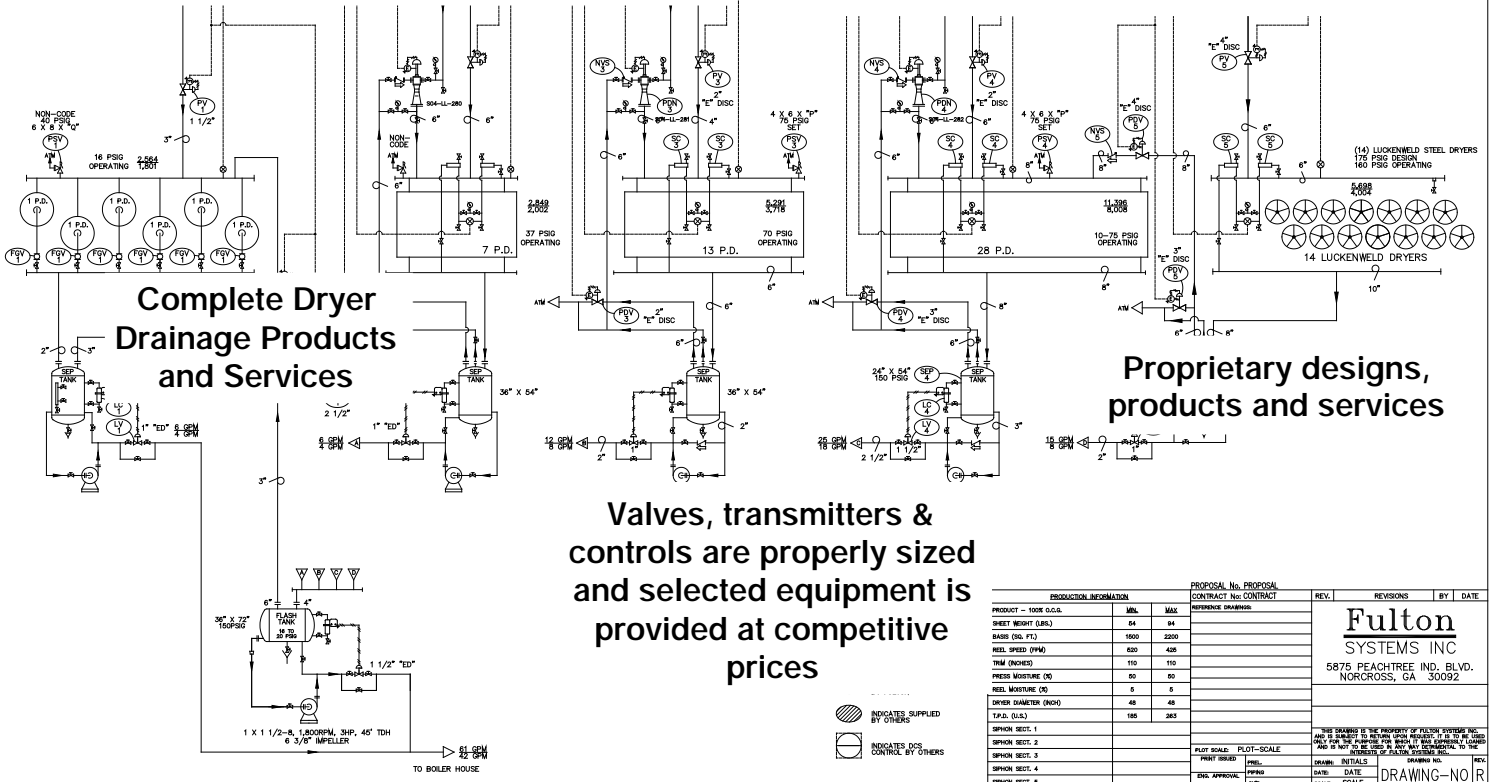
- Dryer bars improve heat transfer coefficient through the dryer shell
- Increase drying performance and improve moisture profile to improve drying quality
- Support rings in three sections and are supported on the dryer shell, not on the bars
- Support ring segments interlock with one another for quick installation
- Bars are in uniform contact with dryer shell and can freely expand and contract

“Our business is quality steam and condensate systems, products and services for paper machines.”

NUMBER 2 PAPER MACHINE

- Dryer Section Audits
- Engineering and Troubleshooting Consulting Services
- System Design and Equipment Supply

- Engineering Studies for System Optimization
- New and Rebuild Steam and Condensate Systems
- Start-up Assistance and Operator Training



**Complete Dryer
Drainage Products
and Services**

**Proprietary designs,
products and services**

**Valves, transmitters &
controls are properly sized
and selected equipment is
provided at competitive
prices**

PRODUCTION INFORMATION		PROPOSAL No. PROPOSAL		REV.	REVISIONS	DATE
PRODUCT - TONS O.D.S.	MIN.	MAX.	CONTRACT No. CONTRACT			
SHEET WEIGHT (GSM)	54	54	RESPONSE DRAWING			
BASS (GAL. FL.)	1500	2200				
HEEL SPEED (FPM)	400	425				
TRM (INCHES)	110	110				
PRESS MOISTURE (G)	50	50				
HEEL MOISTURE (G)	5	5				
DRYER DIAMETER (INCH)	48	48				
TAPL (GAL.)	165	263				
SIPHON SECT. 1						
SIPHON SECT. 2						
SIPHON SECT. 3						
SIPHON SECT. 4						
SIPHON SECT. 5						
SIPHON SECT. 6						

A FEW OF OUR PROPRIETARY PRODUCTS



Fulton Condensers

Fulton offers Straight Tube & U-Tube designs which are engineered for each application. Replacement tube bundles are available.



Fulton Thermocompressor

With over seventy-five years in the steam and condensate systems business, Fulton Systems' Thermocompressors have a long history of proven quality in recirculating booster and Yankee dryer applications.



Fulton ASME Separator, Vacuum, Collection Modular Skid Assemblies

Eliminates expensive field assembly. All equipment supplied is custom engineered and selected to meet specific machine needs. Units are ready for installation.



Fulton Steam Conditioners

Fulton offers both absorption and in-line designs to control superheated steam to acceptable levels.



Inside Sales: Mary Jo Rembold

5875 Peachtree Industrial Blvd. Suite 330 Norcross, GA 30092

PH: 770.447.1400 Fx: 770.447.4277

Internet: www.fultonsystems.com

Email: mjr@fultonsystems.com